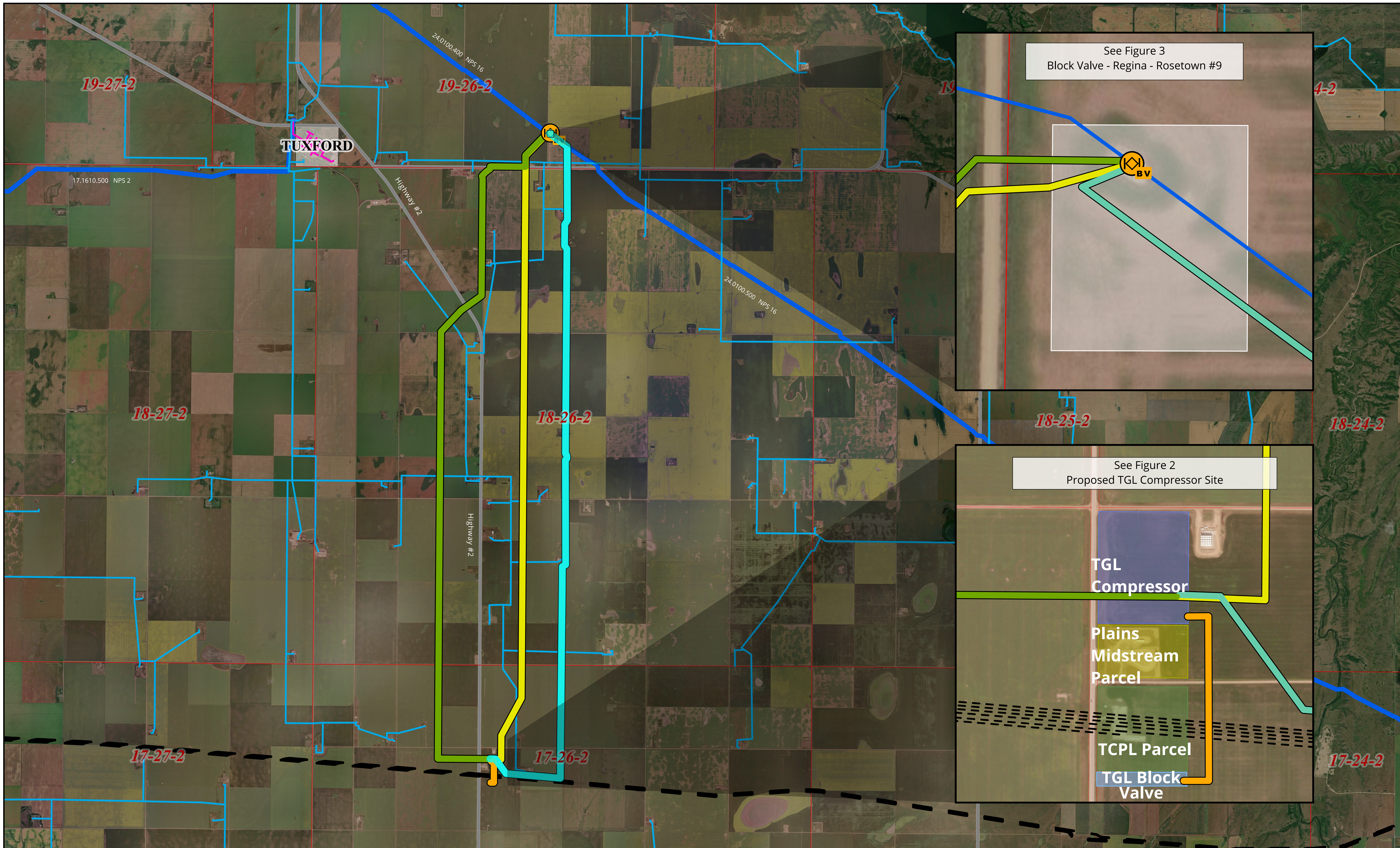


Figure 1 - Moose Jaw TCPL Interconnect and Compression - Aerial Overview



Data Source Acknowledgement(s):
Adapted from: Information Services Corporation of Saskatchewan (ISC), SaskGIS Cadastral Dataset and/or Topographic Dataset. © 2026 SaskEnergy Incorporated and Subsidiaries. © 2026 ISC respecting the basemap product. All rights reserved respecting the facilities of these companies.

Attention: This confidential data is owned by SaskEnergy, its affiliates, or third parties and is provided to you on the following terms:
1) Data shall not be disclosed to third parties or used for any other purpose than agreed;
2) Data is provided 'as-is' without warranty or representation of accuracy, timeliness, or completeness and is current to date indicated;
3) Locations of gas lines are approximate only and you must place a request of exact facility locates to Sask1stCall Corporation, toll free at 1-866-828-4888 or through www.Sask1stCall.com;
4) You agree to indemnify SaskEnergy or claim any damages that arise out of your improper use or disclosure of the data.

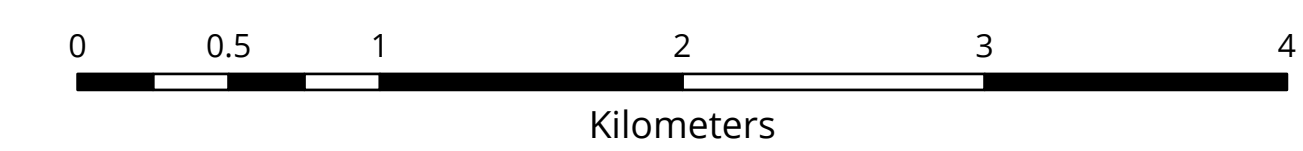
For complete listing of terms and conditions attached to and incorporated into SaskEnergy's license and authorization of your use of this data, see the following website link: www.SaskEnergy.com/disclaimer.asp

SaskEnergy Distribution Pipeline

- MP
- IP
- TransGas Pipeline
- TCPL Mainline

Planned Pipe

- Interconnect Pipeline
- Option #1
- Option #2
- Option #3
- Provincial Highways



Coordinate System: NAD1983 CSRS UTM 13N
Map data current as of 27-May-2026
EM